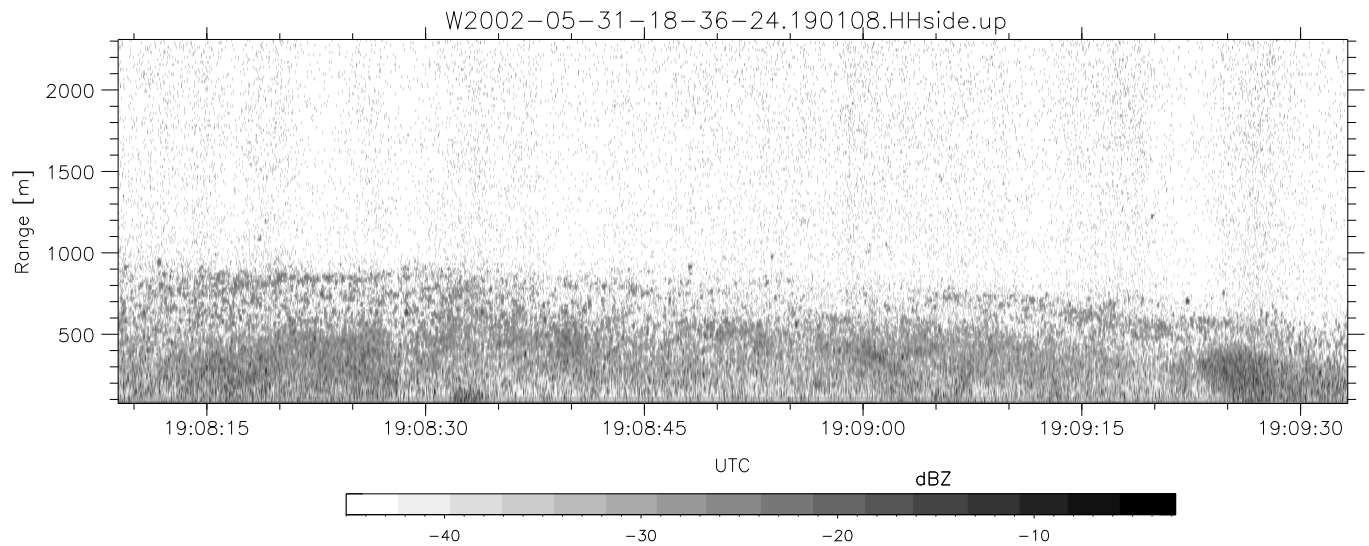
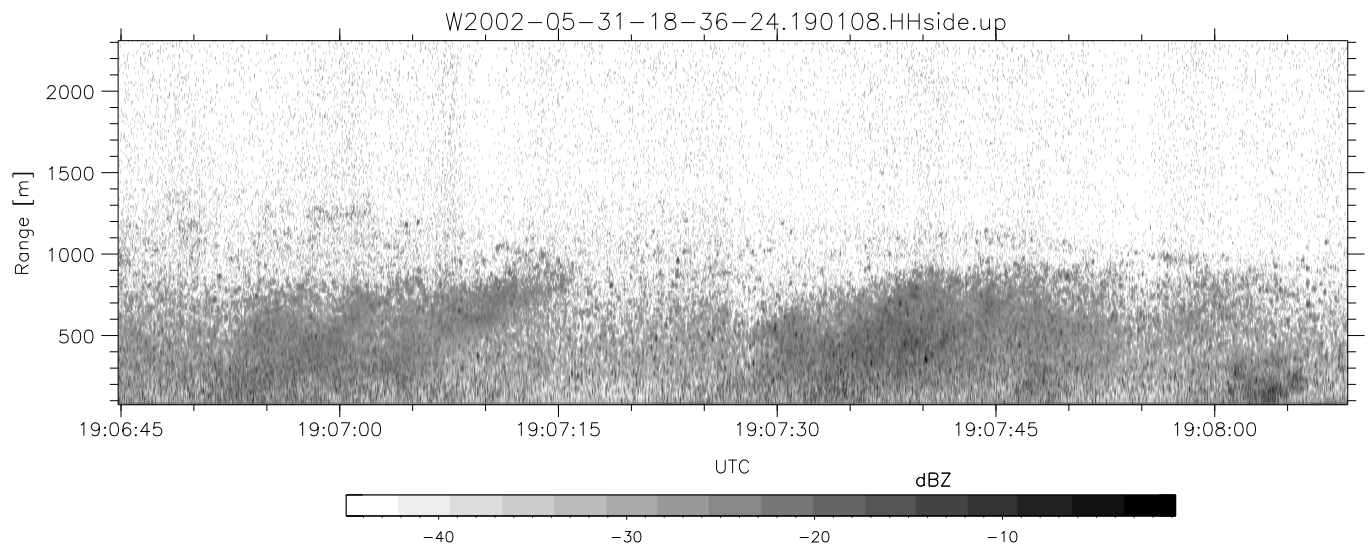
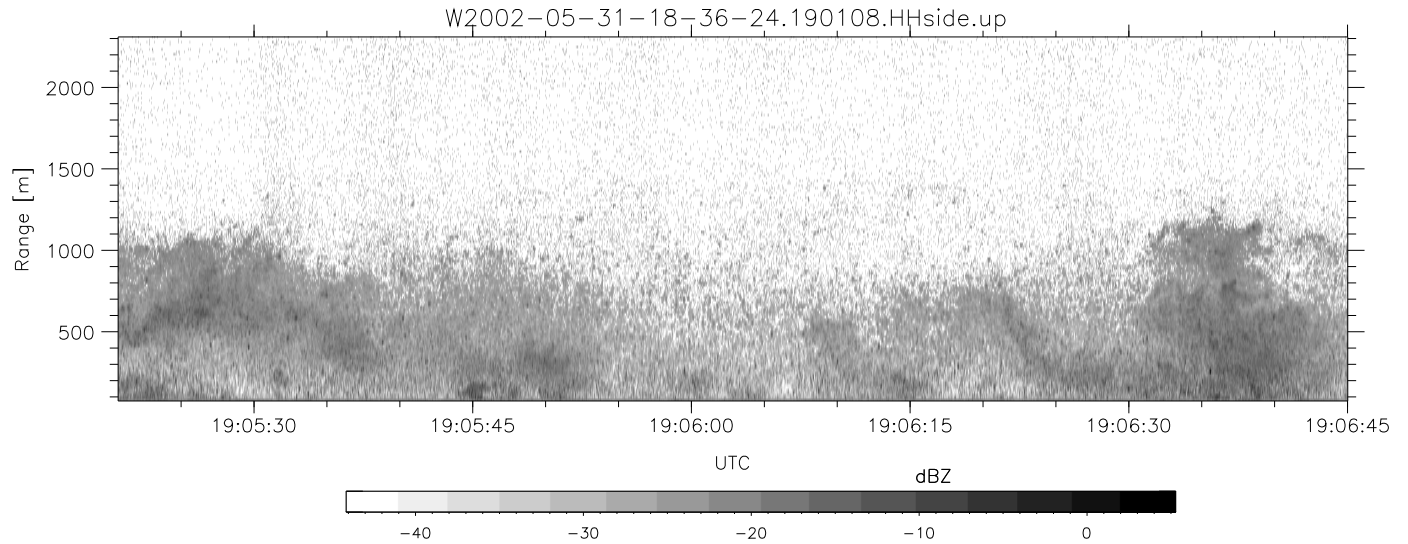


IHOP 2002 (dual-antenna config, modes 1,3,4,7) Data (cal: 49.0,50.0)

W2002-05-31-18-36-24 - SPPMAG
 IRIG:1,UTC: 18:36:02.67 to 20:00:07.58, Dur: 5045s
 TimeLngth: 5044.91s, TimeInt: 24ms (41.0pps)
 TimeCor=-13.0s, DSPDif(mn,mx,min):27,20,232
 PPS(min,max,std): 33,42,2.30
 Prof: 1363 to 208217, NumProf(t/r): 206854/30875
 ProcTime/Recs: 19:01:08-19:13:40/61750-92624
 MxACQtime: 17ms; DRate: 98.2KB/s; Flags: 0, 0, 0
 Pulse: 275ns, IFfilt: 5.0MHz; ppPol: HH
 TxPol: H, PRF: 20 kHz
 Range: Delay 75m, Spacing 15m, Gates 150
 Ave. Pulses: 348, Rng/Prof Aspect@90m/s: 6.8

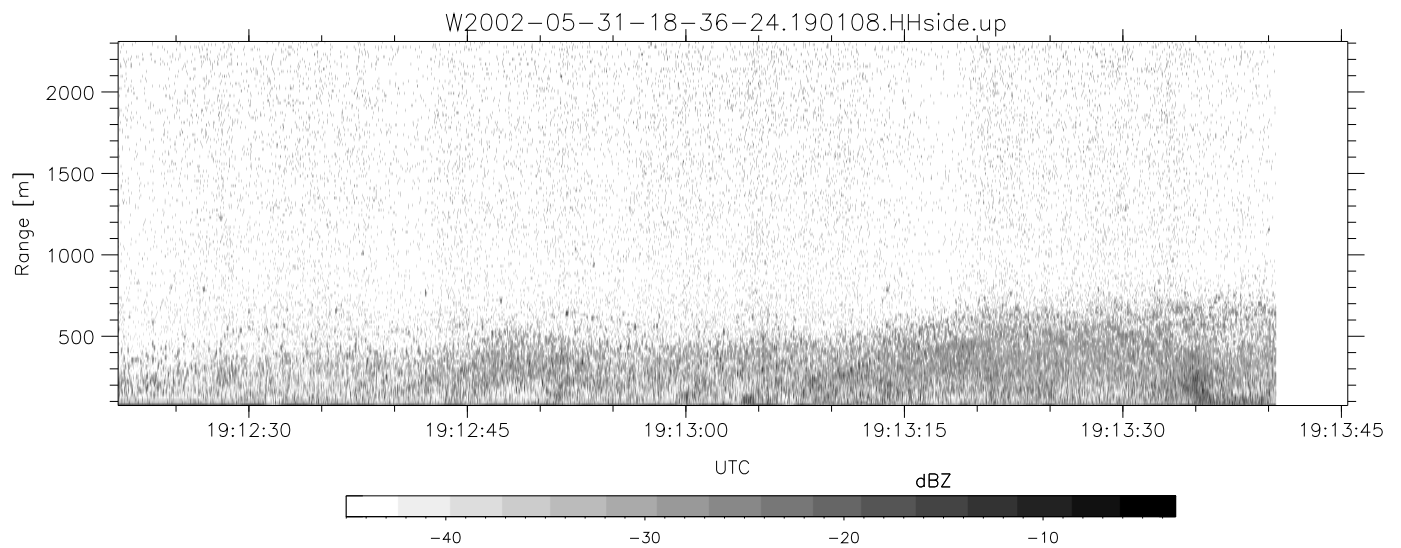
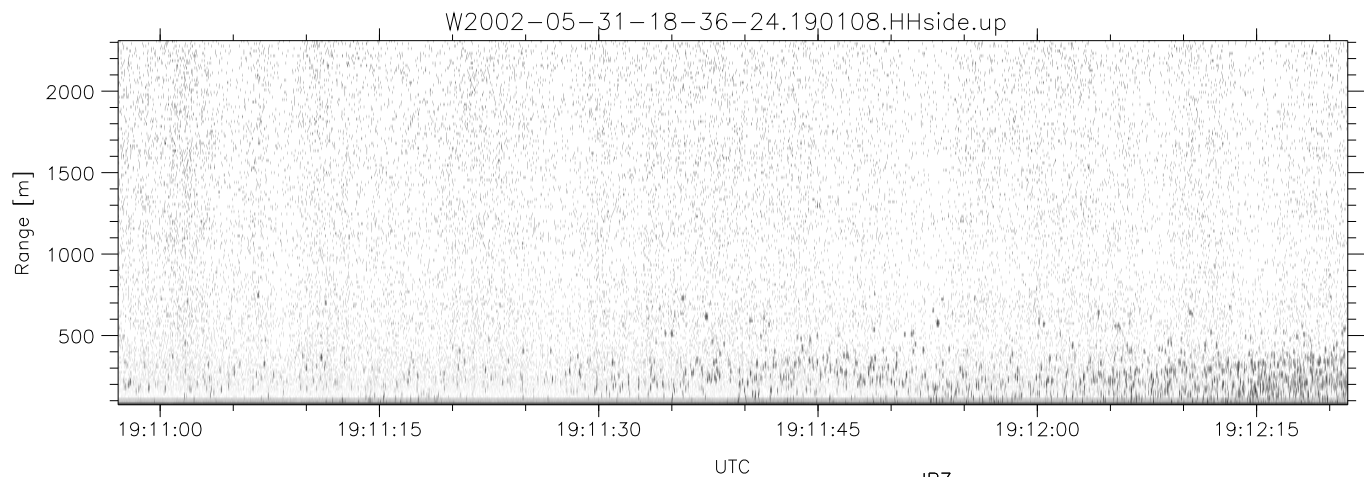
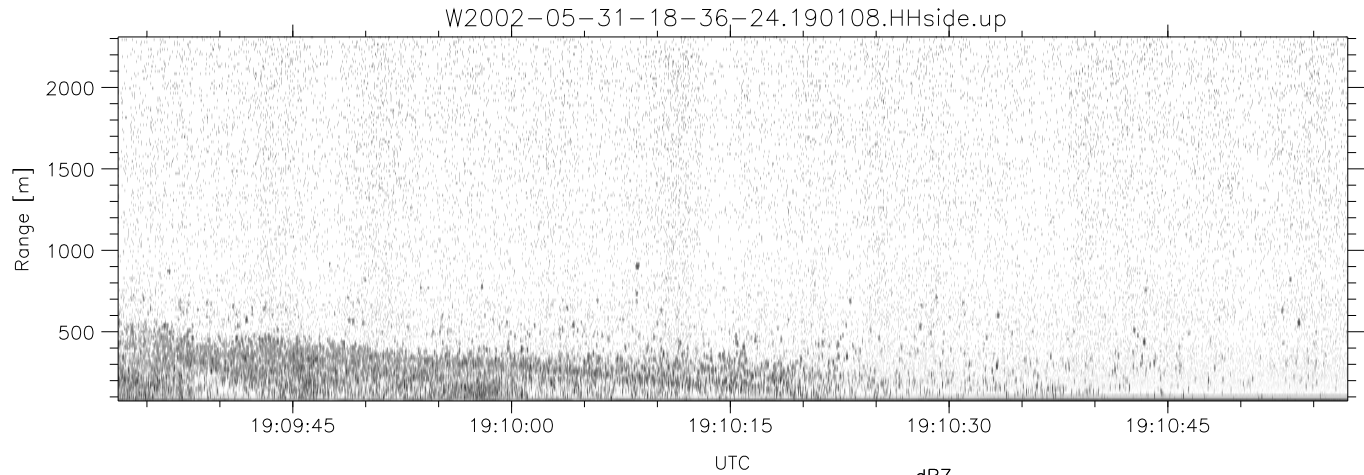
	Min	Max	Mean	Std	Varc%
hhN(dB)	-66.41	-64.61	-65.56	-78.44	5.2
vvN(dB)	-69.85	-67.97	-68.91	-81.85	5.1
hhL(dB)	-31.39	-8.23	-13.90	-16.93	49.9
vhL(dB)	-55.03	-36.84	-43.61	-46.85	47.4
ppN(m/s)	-15.80	15.80	-0.04	9.03	
ppT(m/s)	-0.12	0.18	-0.00	0.01	
vh/hh(dB)	-NaN	-35.19	-42.62	-41.41	132.
hnjmp(dB)	-0.94	1.26	0.14	-11.55	6.8
vnjmp(dB)	-1.02	1.32	0.12	-11.49	6.9



IHOP 2002 (dual-antenna config, modes 1,3,4,7) Data (cal: 49.0,50.0)

W2002-05-31-18-36-24 - SPPMAG
 IRIG:1,UTC: 18:36:02.67 to 20:00:07.58, Dur: 5045s
 TimeLngth: 5044.91s, TimeInt: 24ms (41.0pps)
 TimeCor=-13.0s, DSPDif(mn,mx,min):27,20,232
 PPS(min,max,std): 33,42,2.30
 Prof: 1363 to 208217, NumProf(t/r): 206854/30875
 ProcTime/Recs: 19:01:08-19:13:40/61750-92624
 MxACQtime: 17ms; DRate: 98.2KB/s; Flags: 0, 0, 0
 Pulse: 275ns, IFfilt: 5.0MHz; ppPol: HH
 TxPol: H, PRF: 20 kHz
 Range: Delay 75m, Spacing 15m, Gates 150
 Ave. Pulses: 348, Rng/Prof Aspect@90m/s: 6.8

	Min	Max	Mean	Std	Varc%
hhN(dB)	-66.41	-64.61	-65.56	-78.44	5.2
vvN(dB)	-69.85	-67.97	-68.91	-81.85	5.1
hhL(dB)	-31.39	-8.23	-13.90	-16.93	49.9
vhL(dB)	-55.03	-36.84	-43.61	-46.85	47.4
ppN(m/s)	-15.80	15.80	-0.04	9.03	
ppT(m/s)	-0.12	0.18	-0.00	0.01	
vh/hh(dB)	-NaN	-35.19	-42.62	-41.41	132.
hn_jmp(dB)	-0.94	1.26	0.14	-11.55	6.8
vn_jmp(dB)	-1.02	1.32	0.12	-11.49	6.9



IHOP 2002 (dual-antenna config, modes 1,3,4,7) Data (cal: 49.0,50.0)

W2002-05-31-18-36-24 - SPPMAG
 IRIG:1,UTC: 18:36:02.67 to 20:00:07.58, Dur: 5045s
 TimeLngth: 5044.91s, TimeInt: 24ms (41.0pps)
 TimeCor=-13.0s, DSPDif(mn,mx,min):27,20,232
 PPS(min,max,std): 33,42,2.30
 Prof: 1363 to 208217, NumProf(t/r): 206854/30875
 ProcTime/Recs: 19:01:08-19:13:40/61750-92624
 MxACQtime: 17ms; DRate: 98.2KB/s; Flags: 0, 0, 0
 Pulse: 275ns, IFfilt: 5.0MHz; ppPol: HH
 TxPol: H, PRF: 20 kHz
 Range: Delay 75m, Spacing 15m, Gates 150
 Ave. Pulses: 348, Rng/Prof Aspect@90m/s: 6.8

	Min	Max	Mean	Std	Varc%
hhN (dB)	-66.41	-64.61	-65.56	-78.44	5.2
vvN (dB)	-69.85	-67.97	-68.91	-81.85	5.1
hhL (dB)	-31.39	-8.23	-13.90	-16.93	49.9
vhL (dB)	-55.03	-36.84	-43.61	-46.85	47.4
ppN (m/s)	-15.80	15.80	-0.04	9.03	
ppT (m/s)	-0.12	0.18	-0.00	0.01	
vh/hh (dB)	-NaN	-35.19	-42.62	-41.41	132.
hnjmp (dB)	-0.94	1.26	0.14	-11.55	6.8
vnjmp (dB)	-1.02	1.32	0.12	-11.49	6.9