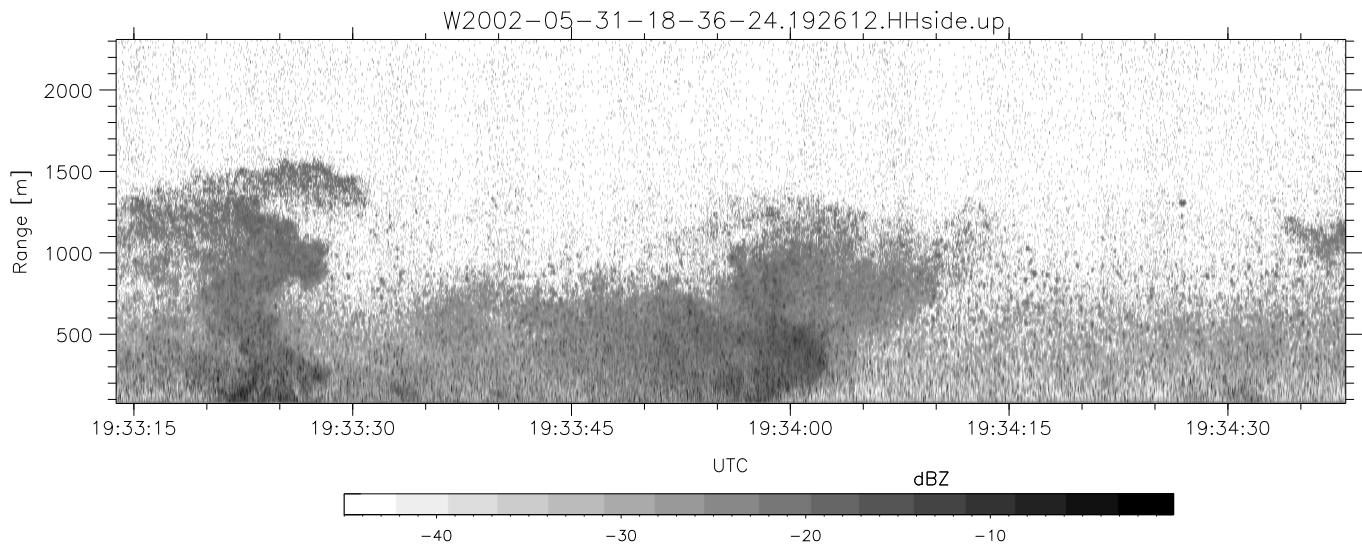
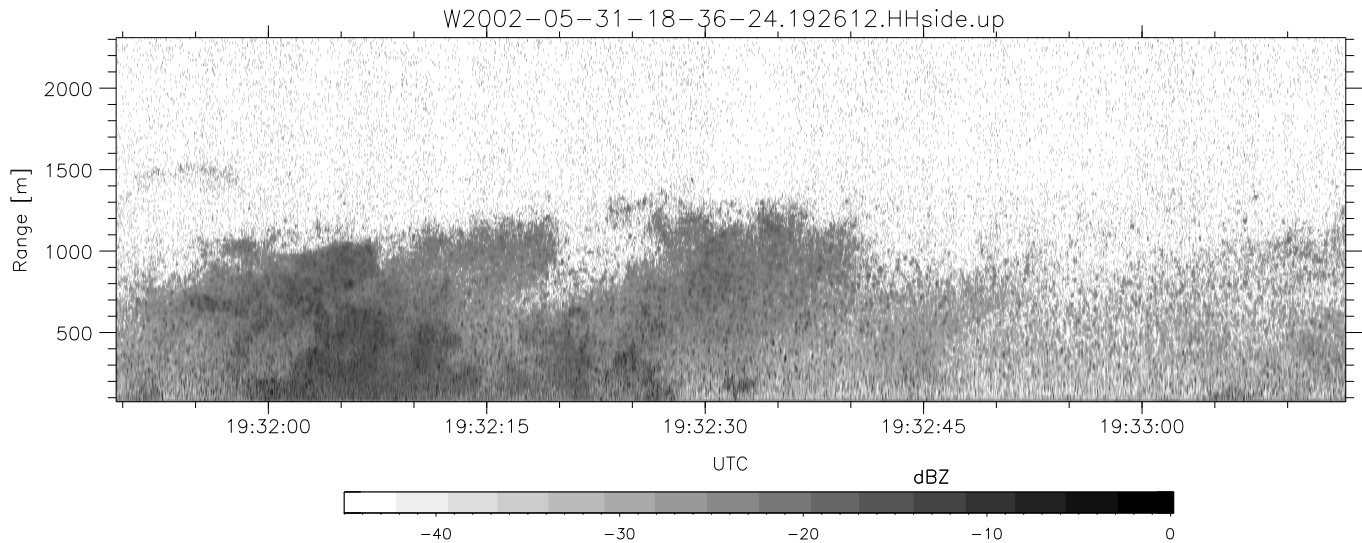
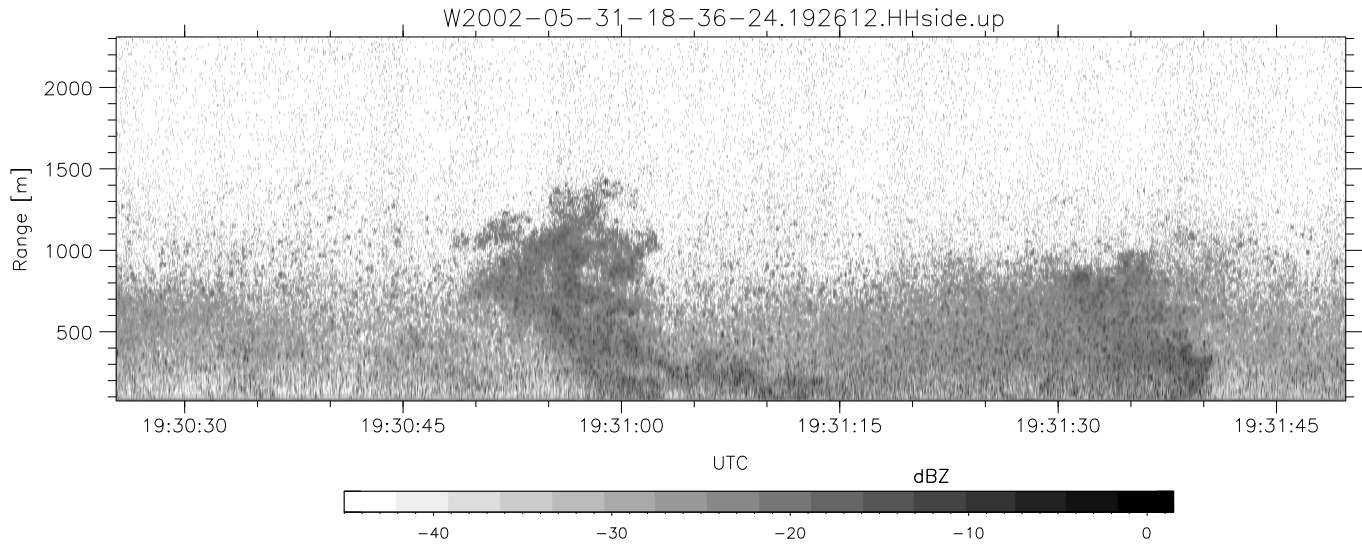


IHOP 2002 (dual-antenna config, modes 1,3,4,7) Data (cal: 49.0,50.0)

W2002-05-31-18-36-24 - SPPMAG  
 IRIG:1,UTC: 18:36:02.67 to 20:00:07.58, Dur: 5045s  
 TimeLngth: 5044.91s, TimeInt: 24ms (41.0pps)  
 TimeCor=-13.0s, DSPDif(mn,mx,min):26,20,297  
 PPS(min,max,std): 30,42,2.34  
 Prof: 1363 to 208217, NumProf(t/r): 206854/30875  
 ProcTime/Recs: 19:26:12-19:38:45/123500-154374  
 MxACQtime: 17ms; DRate: 98.2KB/s; Flags: 0, 0, 0  
 Pulse: 275ns, IFfilt: 5.0MHz; ppPol: HH  
 TxPol: H, PRF: 20 kHz  
 Range: Delay 75m, Spacing 15m, Gates 150  
 Ave. Pulses: 348, Rng/Prof Aspect@90m/s: 6.8

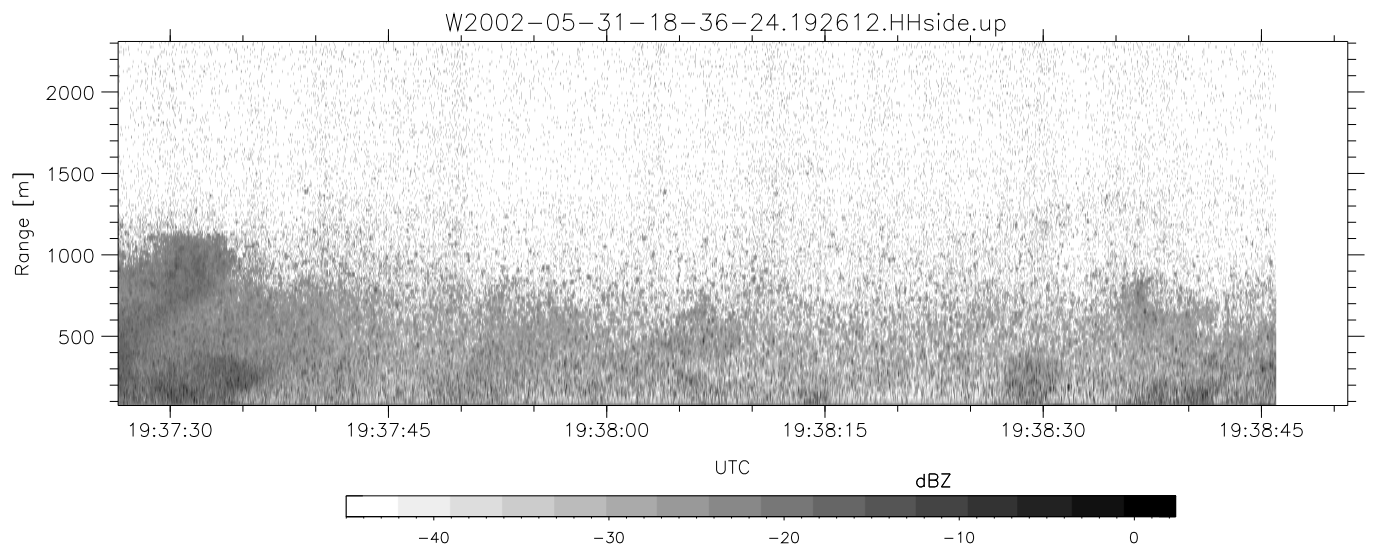
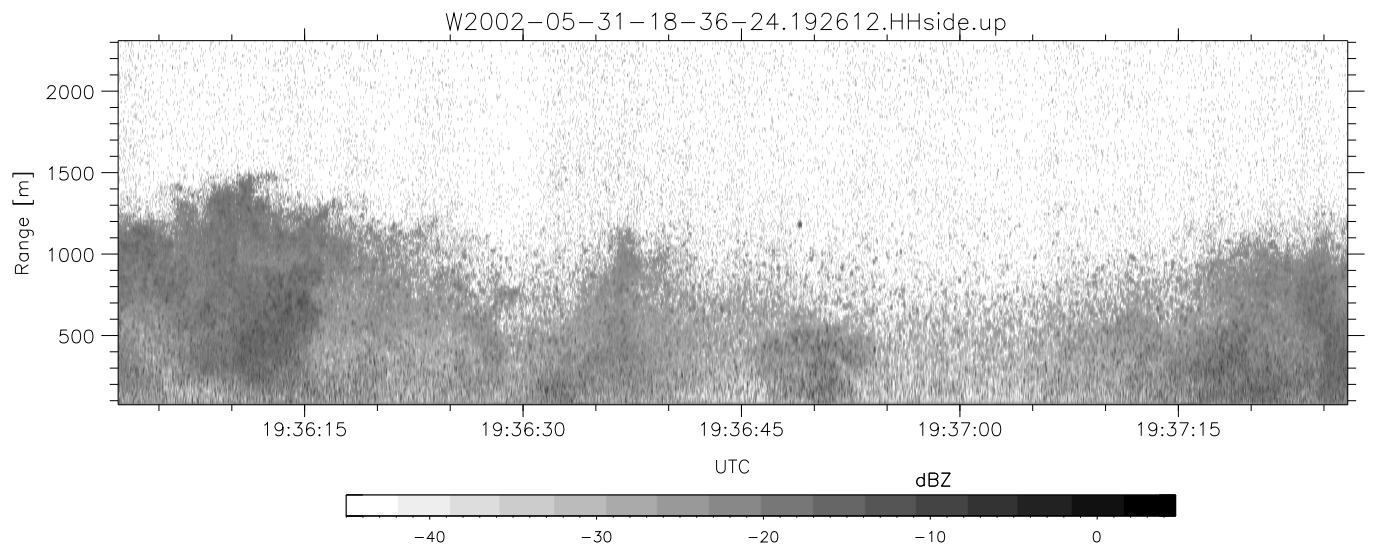
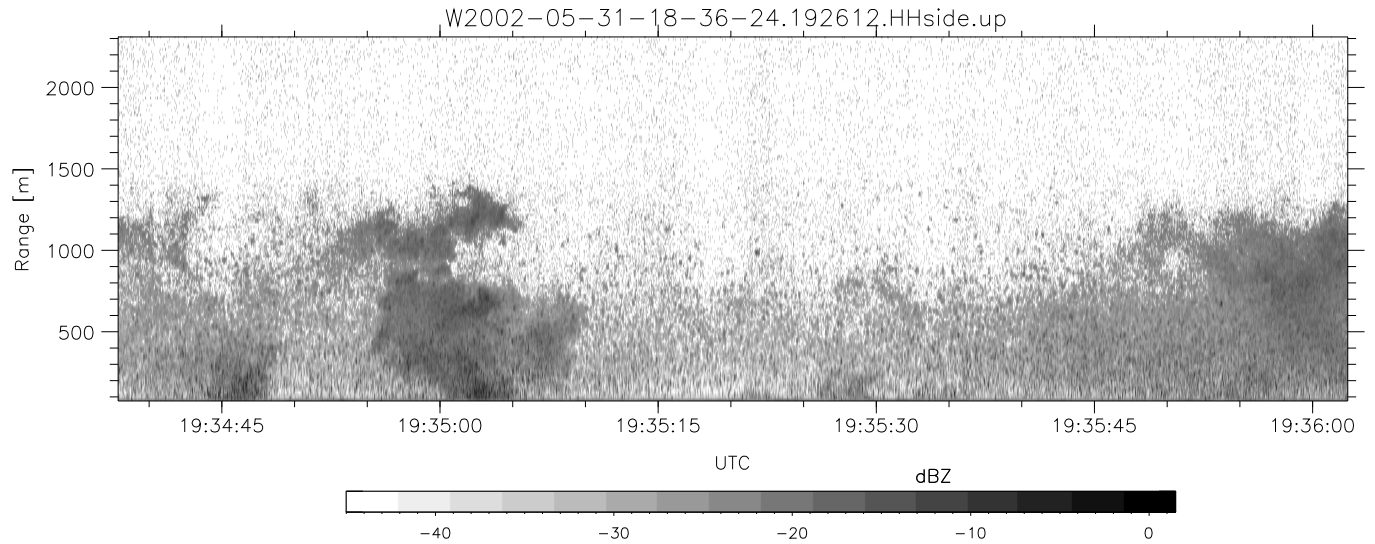
	Min	Max	Mean	Std	Varc%
hhN (dB)	-66.40	-64.01	-65.57	-78.52	5.1
vvN (dB)	-69.86	-68.16	-69.00	-81.99	5.0
hhL (dB)	-25.85	-8.27	-16.91	-19.04	61.4
vhL (dB)	-55.58	-35.62	-45.05	-46.79	67.0
ppN (m/s)	-15.80	15.80	0.02	9.03	
ppT (m/s)	-0.08	0.05	-0.00	0.01	
vh/hh (dB)	-NaN	-34.74	-43.42	-41.37	160.
hnjmp (dB)	-1.11	1.29	0.13	-11.56	6.8
vnjmp (dB)	-1.02	1.25	0.13	-11.51	6.9



IHOP 2002 (dual-antenna config, modes 1,3,4,7) Data (cal: 49.0,50.0)

W2002-05-31-18-36-24 - SPPMAG  
 IRIG:1,UTC: 18:36:02.67 to 20:00:07.58, Dur: 5045s  
 TimeLngth: 5044.91s, TimeInt: 24ms (41.0pps)  
 TimeCor=-13.0s, DSPDif(mn,mx,min):26,20,297  
 PPS(min,max,std): 30,42,2.34  
 Prof: 1363 to 208217, NumProf(t/r): 206854/30875  
 ProcTime/Recs: 19:26:12-19:38:45/123500-154374  
 MxACQtime: 17ms; DRate: 98.2KB/s; Flags: 0, 0, 0  
 Pulse: 275ns, IFfilt: 5.0MHz; ppPol: HH  
 TxPol: H, PRF: 20 kHz  
 Range: Delay 75m, Spacing 15m, Gates 150  
 Ave. Pulses: 348, Rng/Prof Aspect@90m/s: 6.8

	Min	Max	Mean	Std	Varc%
hhN (dB)	-66.40	-64.01	-65.57	-78.52	5.1
vvN (dB)	-69.86	-68.16	-69.00	-81.99	5.0
hhL (dB)	-25.85	-8.27	-16.91	-19.04	61.4
vhL (dB)	-55.58	-35.62	-45.05	-46.79	67.0
ppN (m/s)	-15.80	15.80	0.02	9.03	
ppT (m/s)	-0.08	0.05	-0.00	0.01	
vh/hh (dB)	-NaN	-34.74	-43.42	-41.37	160.
hn_jmp (dB)	-1.11	1.29	0.13	-11.56	6.8
vn_jmp (dB)	-1.02	1.25	0.13	-11.51	6.9



IHOP 2002 (dual-antenna config, modes 1,3,4,7) Data (cal: 49.0,50.0)

W2002-05-31-18-36-24 - SPPMAG  
 IRIG:1,UTC: 18:36:02.67 to 20:00:07.58, Dur: 5045s  
 TimeLngth: 5044.91s, TimeInt: 24ms (41.0pps)  
 TimeCor=-13.0s, DSPDif(mn,mx,min):26,20,297  
 PPS(min,max,std): 30,42,2.34  
 Prof: 1363 to 208217, NumProf(t/r): 206854/30875  
 ProcTime/Recs: 19:26:12-19:38:45/123500-154374  
 MxACQtime: 17ms; DRate: 98.2KB/s; Flags: 0, 0, 0  
 Pulse: 275ns, IFfilt: 5.0MHz; ppPol: HH  
 TxPol: H, PRF: 20 kHz  
 Range: Delay 75m, Spacing 15m, Gates 150  
 Ave. Pulses: 348, Rng/Prof Aspect@90m/s: 6.8

	Min	Max	Mean	Std	Varc%
hhN(dB)	-66.40	-64.01	-65.57	-78.52	5.1
vvN(dB)	-69.86	-68.16	-69.00	-81.99	5.0
hhL(dB)	-25.85	-8.27	-16.91	-19.04	61.4
vhL(dB)	-55.58	-35.62	-45.05	-46.79	67.0
ppN(m/s)	-15.80	15.80	0.02	9.03	
ppT(m/s)	-0.08	0.05	-0.00	0.01	
vh/hh(dB)	-NaN	-34.74	-43.42	-41.37	160.
hnjmp(dB)	-1.11	1.29	0.13	-11.56	6.8
vnjmp(dB)	-1.02	1.25	0.13	-11.51	6.9