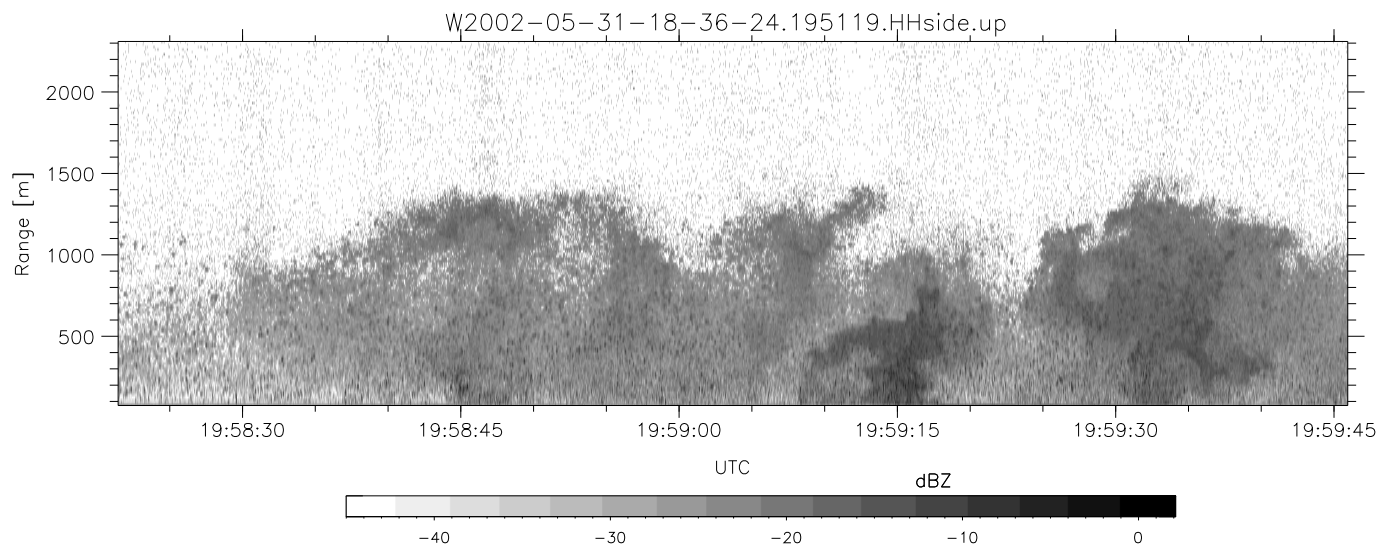
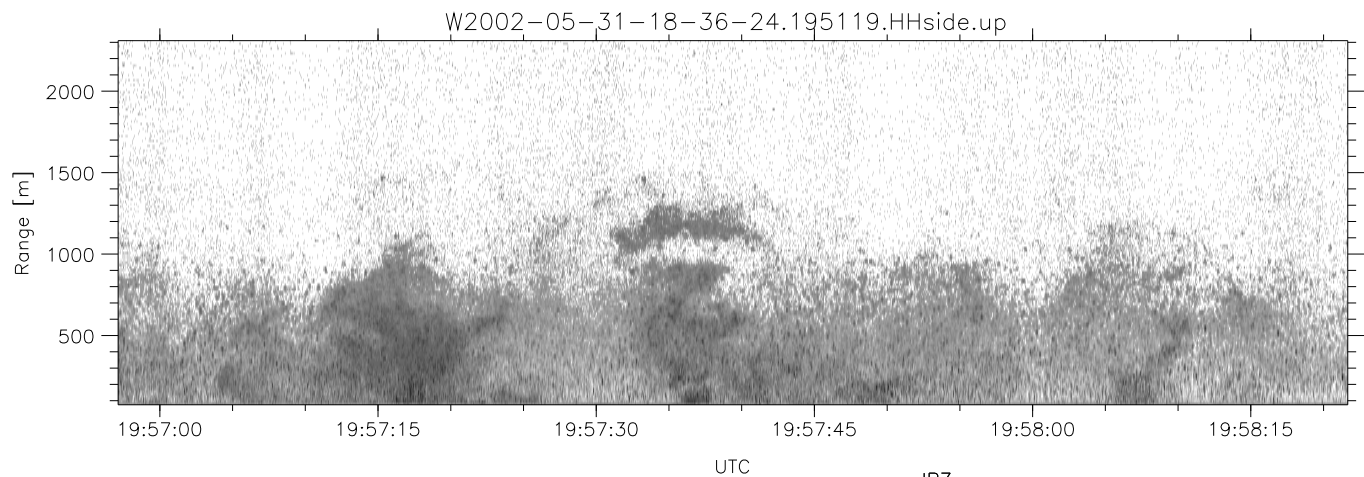
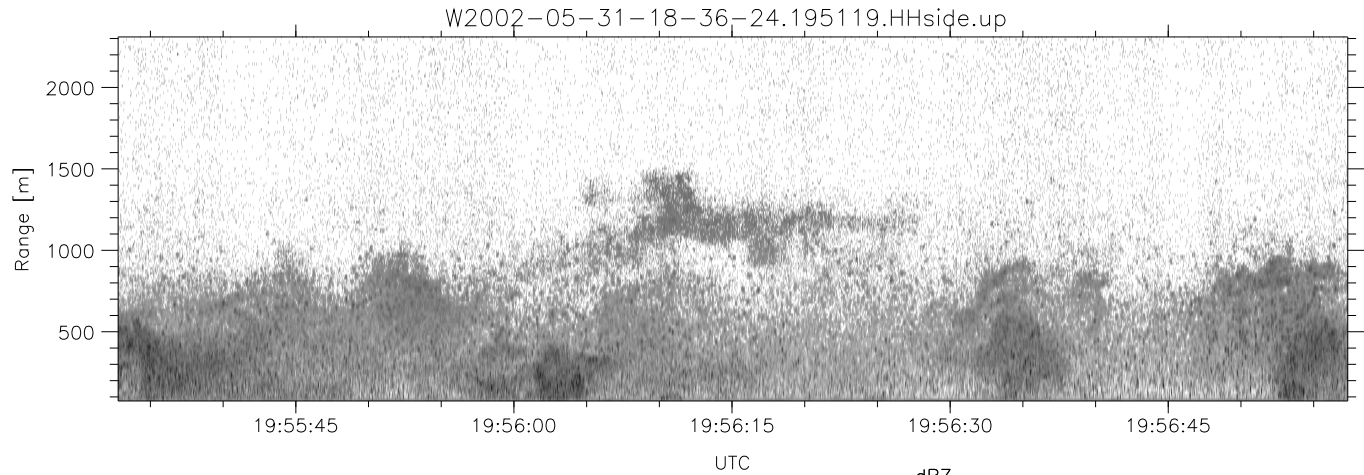


IHOP 2002 (dual-antenna config, modes 1,3,4,7) Data (cal: 49.0,50.0)

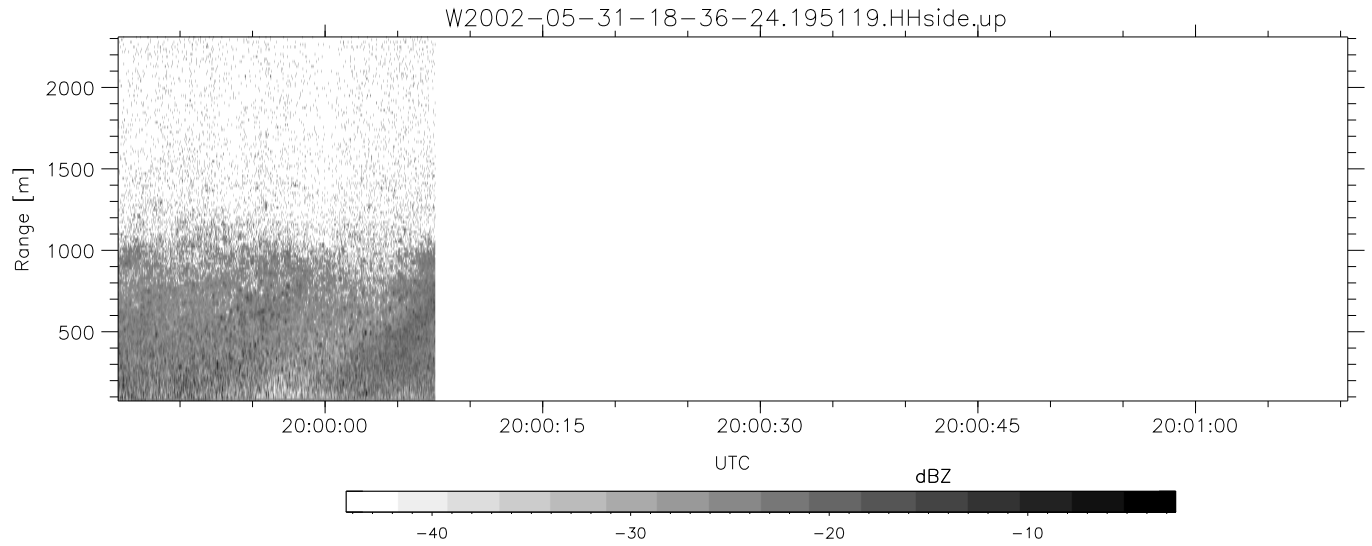
W2002-05-31-18-36-24 - SPPMAG
 IRIG:1,UTC: 18:36:02.67 to 20:00:07.58, Dur: 5045s
 TimeLngth: 5044.91s, TimeInt: 24ms (41.0pps)
 TimeCor=-13.0s, DSPDif(mn,mx,min):24,20,321
 PPS(min,max,std): 29,42,2.33
 Prof: 1363 to 208217, NumProf(t/r): 206854/21604
 ProcTime/Recs: 19:51:19-20:00:07/185250-206853
 MxACQtime: 17ms; DRate: 98.2KB/s; Flags: 0, 0, 0
 Pulse: 275ns, IFfilt: 5.0MHz; ppPol: HH
 TxPol: H, PRF: 20 kHz
 Range: Delay 75m, Spacing 15m, Gates 150
 Ave. Pulses: 348, Rng/Prof Aspect@90m/s: 6.8

	Min	Max	Mean	Std	Varc%
hhN(dB)	-66.63	-64.90	-65.68	-78.69	5.0
vvN(dB)	-69.99	-68.30	-69.12	-82.11	5.0
hhL(dB)	-27.58	-9.90	-19.43	-20.85	72.1
vhL(dB)	-56.57	-37.40	-47.55	-48.52	80.1
ppN(m/s)	-15.80	15.80	-0.05	8.99	
ppT(m/s)	-0.06	0.05	-0.00	0.01	
vh/hh(dB)	-NaN	-34.47	-43.97	-41.54	175.
hnjmp(dB)	-0.98	1.33	0.13	-11.55	6.8
vnjmp(dB)	-1.08	1.32	0.13	-11.50	6.9



IHOP 2002 (dual-antenna config, modes 1,3,4,7) Data (cal: 49.0,50.0)

	Min	Max	Mean	Std	Varc%
W2002-05-31-18-36-24 - SPPMAG					
IRIG:1,UTC: 18:36:02.67 to 20:00:07.58, Dur: 5045s	hhN (dB)	-66.63 -64.90	-65.68	-78.69	5.0
TimeLngth: 5044.91s, TimeInt: 24ms (41.0pps)	vvN (dB)	-69.99 -68.30	-69.12	-82.11	5.0
TimeCor=-13.0s, DSPDif(mn,mx,min):24,20,321	hhL (dB)	-27.58 -9.90	-19.43	-20.85	72.1
PPS(min,max,std): 29,42,2.33	vhL (dB)	-56.57 -37.40	-47.55	-48.52	80.1
Prof: 1363 to 208217, NumProf(t/r): 206854/21604	ppN (m/s)	-15.80 15.80	-0.05	8.99	
ProcTime/Recs: 19:51:19-20:00:07/185250-206853	ppT (m/s)	-0.06 0.05	-0.00	0.01	
MxACQtime: 17ms; DRate: 98.2KB/s; Flags: 0, 0, 0	vh/hh (dB)	-NaN -34.47	-43.97	-41.54	175.
Pulse: 275ns, IFfilt: 5.0MHz; ppPol: HH	hn_jmp (dB)	-0.98 1.33	0.13	-11.55	6.8
TxPol: H, PRF: 20 kHz	vn_jmp (dB)	-1.08 1.32	0.13	-11.50	6.9
Range: Delay 75m, Spacing 15m, Gates 150					
Ave. Pulses: 348, Rng/Prof Aspect@90m/s: 6.8					



IHOP 2002 (dual-antenna config, modes 1,3,4,7) Data (cal: 49.0,50.0)

W2002-05-31-18-36-24 - SPPMAG
 IRIG:1,UTC: 18:36:02.67 to 20:00:07.58, Dur: 5045s
 TimeLngth: 5044.91s, TimeInt: 24ms (41.0pps)
 TimeCor=-13.0s, DSPDif(mn,mx,min):24,20,321
 PPS(min,max,std): 29,42,2.33
 Prof: 1363 to 208217, NumProf(t/r): 206854/21604
 ProcTime/Recs: 19:51:19-20:00:07/185250-206853
 MxACQtime: 17ms; DRate: 98.2KB/s; Flags: 0, 0, 0
 Pulse: 275ns, IFfilt: 5.0MHz; ppPol: HH
 TxPol: H, PRF: 20 kHz
 Range: Delay 75m, Spacing 15m, Gates 150
 Ave. Pulses: 348, Rng/Prof Aspect@90m/s: 6.8

	Min	Max	Mean	Std	Varc%
hhN(dB)	-66.63	-64.90	-65.68	-78.69	5.0
vvN(dB)	-69.99	-68.30	-69.12	-82.11	5.0
hhL(dB)	-27.58	-9.90	-19.43	-20.85	72.1
vhL(dB)	-56.57	-37.40	-47.55	-48.52	80.1
ppN(m/s)	-15.80	15.80	-0.05	8.99	
ppT(m/s)	-0.06	0.05	-0.00	0.01	
vh/hh(dB)	-NaN	-34.47	-43.97	-41.54	175.
hnjmp(dB)	-0.98	1.33	0.13	-11.55	6.8
vnjmp(dB)	-1.08	1.32	0.13	-11.50	6.9