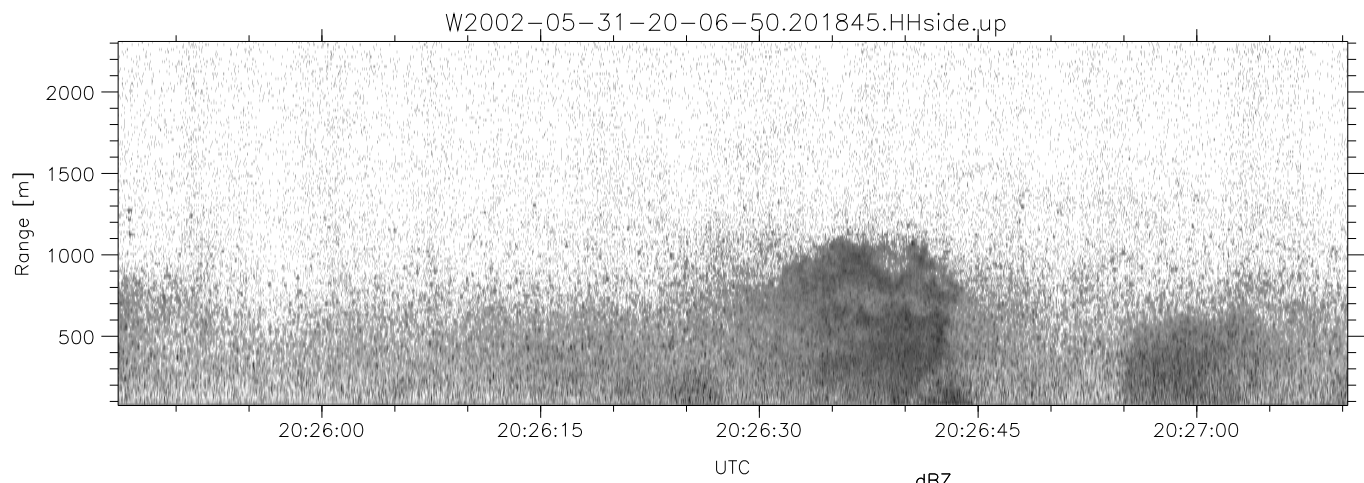
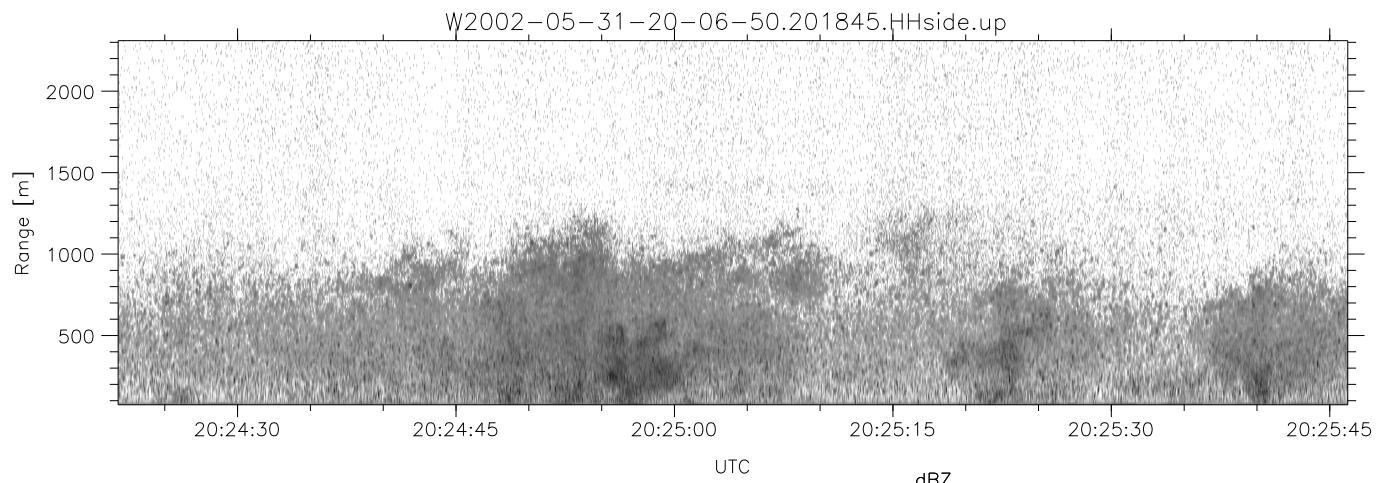
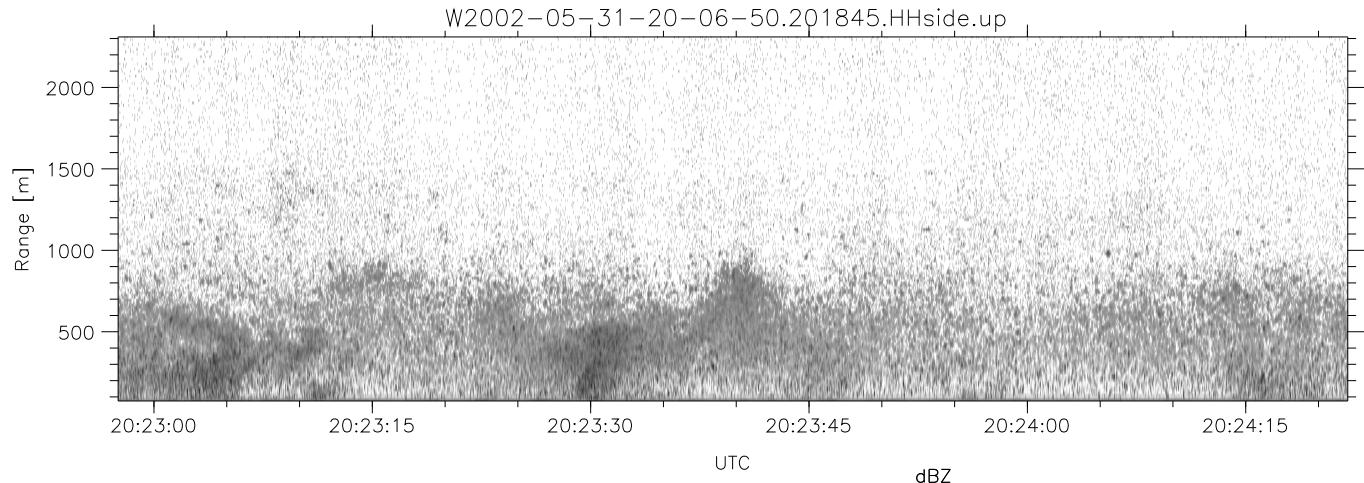


IHOP 2002 (dual-antenna config, modes 1,3,4,7) Data (cal: 49.0,50.0)

W2002-05-31-20-06-50 - SPPMAG  
 IRIG:1,UTC: 20:06:29.44 to 20:35:19.94, Dur: 1730s  
 TimeLngth: 1730.49s, TimeInt: 24ms (40.9pps)  
 TimeCor=-13.0s, DSPDif(mn,mx,min):24,20,337  
 PPS(min,max,std): 28,42,2.37  
 Prof: 1200 to 71979, NumProf(t/r): 70779/30122  
 ProcTime/Recs: 20:18:45-20:31:01/30122-60243  
 MxACQtime: 17ms; DRate: 97.9KB/s; Flags: 0, 0, 0  
 Pulse: 275ns, IFfilt: 5.0MHz; ppPol: HH  
 TxPol: H, PRF: 20 kHz  
 Range: Delay 75m, Spacing 15m, Gates 150  
 Ave. Pulses: 348, Rng/Prof Aspect@90m/s: 6.8

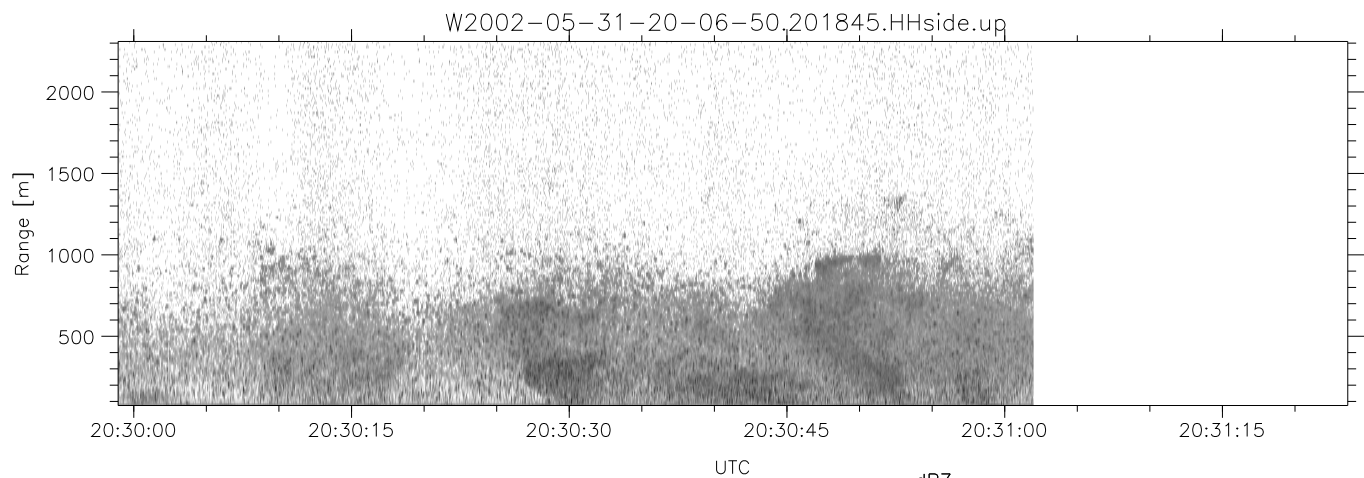
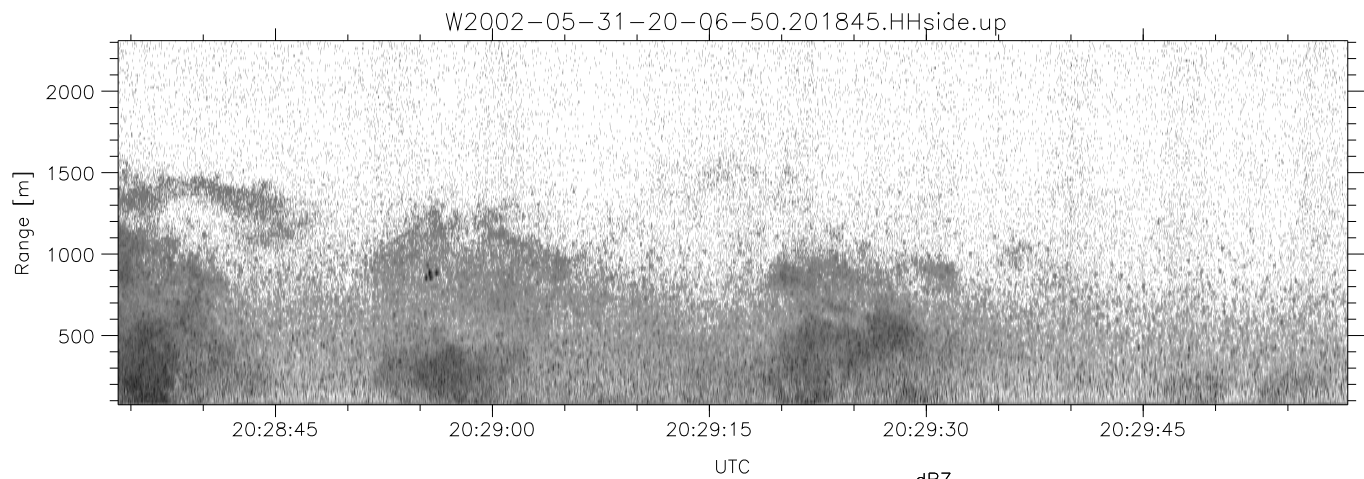
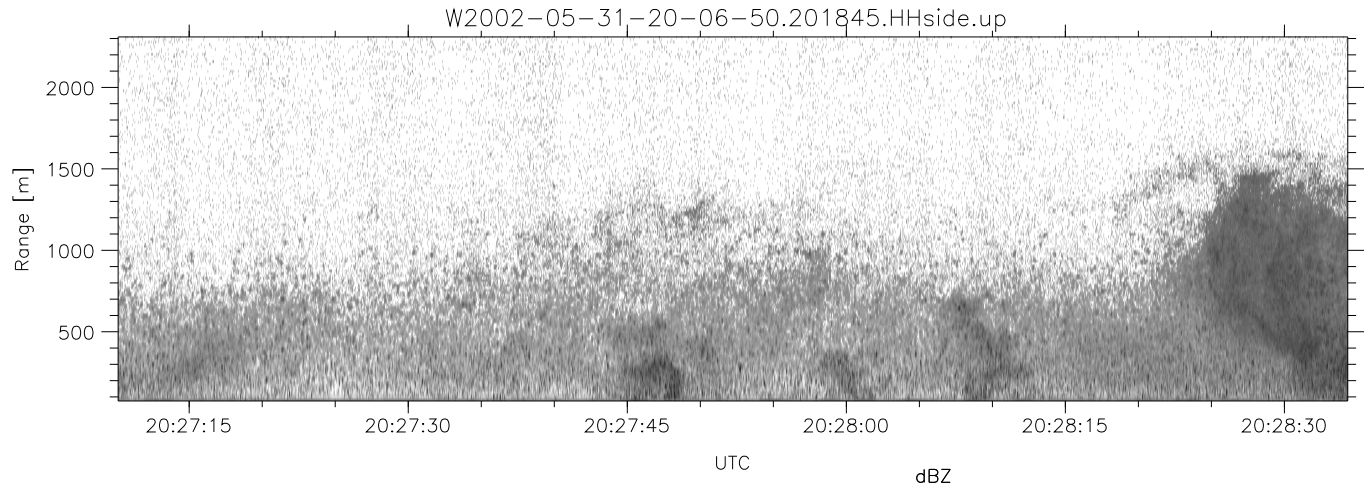
	Min	Max	Mean	Std	Varc%
hhN(dB)	-66.56	-64.88	-65.71	-78.73	5.0
vvN(dB)	-70.02	-68.30	-69.16	-82.17	5.0
hhL(dB)	-25.36	-8.61	-17.13	-18.87	67.1
vhL(dB)	-55.52	-35.10	-44.22	-45.55	73.7
ppN(m/s)	-15.80	15.80	0.05	9.05	
ppT(m/s)	-0.05	0.04	-0.00	0.01	
vh/hh(dB)	-NaN	-35.31	-43.67	-41.55	163.
hn_jmp(dB)	-1.29	1.09	-0.10	-11.80	6.8
vn_jmp(dB)	-1.29	1.03	-0.11	-11.76	6.8



IHOP 2002 (dual-antenna config, modes 1,3,4,7) Data (cal: 49.0,50.0)

W2002-05-31-20-06-50 - SPPMAG  
 IRIG:1,UTC: 20:06:29.44 to 20:35:19.94, Dur: 1730s  
 TimeLngth: 1730.49s, TimeInt: 24ms (40.9pps)  
 TimeCor=-13.0s, DSPDif(mn,mx,min):24,20,337  
 PPS(min,max,std): 28,42,2.37  
 Prof: 1200 to 71979, NumProf(t/r): 70779/30122  
 ProcTime/Recs: 20:18:45-20:31:01/30122-60243  
 MxACQtime: 17ms; DRate: 97.9KB/s; Flags: 0, 0, 0  
 Pulse: 275ns, IFfilt: 5.0MHz; ppPol: HH  
 TxPol: H, PRF: 20 kHz  
 Range: Delay 75m, Spacing 15m, Gates 150  
 Ave. Pulses: 348, Rng/Prof Aspect@90m/s: 6.8

	Min	Max	Mean	Std	Varc%
hhN(dB)	-66.56	-64.88	-65.71	-78.73	5.0
vvN(dB)	-70.02	-68.30	-69.16	-82.17	5.0
hhL(dB)	-25.36	-8.61	-17.13	-18.87	67.1
vhL(dB)	-55.52	-35.10	-44.22	-45.55	73.7
ppN(m/s)	-15.80	15.80	0.05	9.05	
ppT(m/s)	-0.05	0.04	0.00	0.01	
vh/hh(dB)	-NaN	-35.31	-43.67	-41.55	163.
hnjmp(dB)	-1.29	1.09	-0.10	-11.80	6.8
vnjmp(dB)	-1.29	1.03	-0.11	-11.76	6.8



IHOP 2002 (dual-antenna config, modes 1,3,4,7) Data (cal: 49.0,50.0)

W2002-05-31-20-06-50 - SPPMAG  
 IRIG:1,UTC: 20:06:29.44 to 20:35:19.94, Dur: 1730s  
 TimeLngth: 1730.49s, TimeInt: 24ms (40.9pps)  
 TimeCor=-13.0s, DSPDif(mn,mx,min):24,20,337  
 PPS(min,max,std): 28,42,2.37  
 Prof: 1200 to 71979, NumProf(t/r): 70779/30122  
 ProcTime/Recs: 20:18:45-20:31:01/30122-60243  
 MxACQtime: 17ms; DRate: 97.9KB/s; Flags: 0, 0, 0  
 Pulse: 275ns, IFfilt: 5.0MHz; ppPol: HH  
 TxPol: H, PRF: 20 kHz  
 Range: Delay 75m, Spacing 15m, Gates 150  
 Ave. Pulses: 348, Rng/Prof Aspect@90m/s: 6.8

	Min	Max	Mean	Std	Varc%
hhN(dB)	-66.56	-64.88	-65.71	-78.73	5.0
vvN(dB)	-70.02	-68.30	-69.16	-82.17	5.0
hhL(dB)	-25.36	-8.61	-17.13	-18.87	67.1
vhL(dB)	-55.52	-35.10	-44.22	-45.55	73.7
ppN(m/s)	-15.80	15.80	0.05	9.05	
ppT(m/s)	-0.05	0.04	-0.00	0.01	
vh/hh(dB)	-NaN	-35.31	-43.67	-41.55	163.
hnjmp(dB)	-1.29	1.09	-0.10	-11.80	6.8
vnjmp(dB)	-1.29	1.03	-0.11	-11.76	6.8